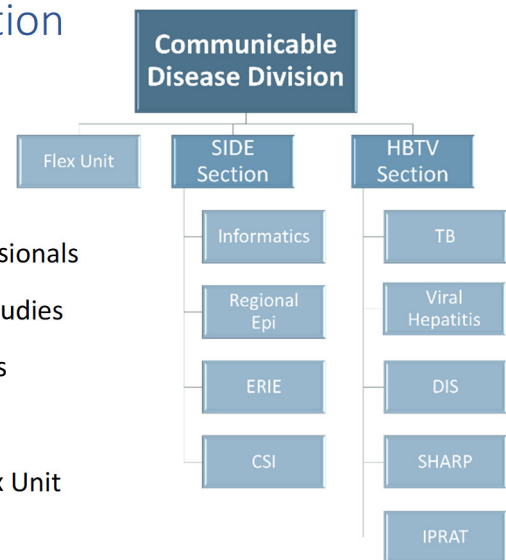


# Michigan Department of Health & Human Services (MDHHS) Communicable Disease (CD) Division Organization



## Communicable Disease Division

- Provide support to local health departments and healthcare professionals
- Analyze and share communicable disease data; engage in special studies
- Develop programs and strategies to control communicable diseases
- Liaise with CDC on communicable disease related issues
- Includes the SIDE Section, HBTB Section, and Emerging Disease Flex Unit

## Surveillance & Infectious disease Epidemiology (SIDE) section

- Monitor, identify, and investigate infectious disease using epidemiologic methods
- Develop and maintain multiple surveillance systems including MDSS, MSSS, and OMS
- Support and collaborate with our public health and healthcare partners
- Develop and enhance capacity to respond to issues of public health importance
- Provide education and guidance to assist with the prevention of infectious disease
- Includes the Informatics Unit, Enteric and Respiratory Illnesses Epidemiology Unit, Regional Epidemiology Unit, and COVID-19 Surveillance and Investigation Unit.

## HEALTHCARE-ACQUIRED Infections, BODY ART, TUBERCULOSIS, VIRAL HEPATITIS (HBTB) SECTION

- Liaise with local health departments and healthcare professionals to prevent and control viral hepatitis, tuberculosis, healthcare associated and resistant pathogens
- Provide education and linkage to care to Michigan residents
- Includes the Tuberculosis Unit, Viral Hepatitis Unit, Disease Intervention Specialist Unit, Surveillance for Healthcare-Associated & Resistant Pathogens Unit, and Infection Prevention Resource & Assessment Team